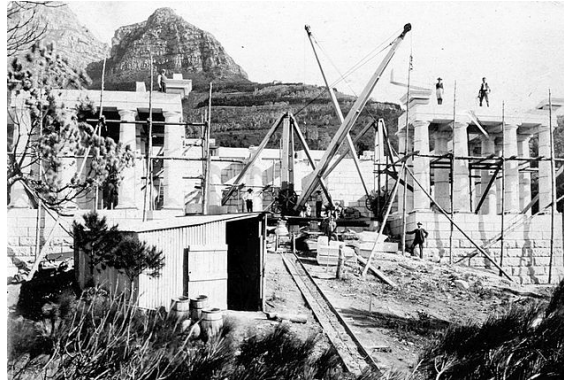


CRITICAL GEOGRAPHIES / GEOGRAPHIES CRITIQUES

Salle RE412, Maison de la Recherche (Aile E)



Photograph of the construction of the Rhodes Memorial, 1906
Unknown photographer, Cape Archives, South Africa

Study Day to be held on Friday 6th March 2015

Organized by Helen Goethals and Mathilde Rogez (DEMA / CAS)

9h30 Keynote speaker: **Klaus Dodds** (University of London, Royal Holloway)

10h30 Pause (salle RE 411)

10h45 Philippe Brillet (Université de Toulouse- Jean Jaurès)
Critical Geographies: A Comparative View

11h30 Isabelle Avila (Université Paris-Est Marne-la-Vallée)
Mental Maps and Mind Maps: How to Think with Maps

12h15 Déjeuner (salle RE 411)

13h30 Marie Mianowski, (Université de Nantes)
From boom to bust: the haunted landscapes of contemporary Ireland in *The Devil I know* (2012) by Claire Kilroy

14h15 Ana Calvete (Université de Toulouse- Jean Jaurès)
Authenticity and Identity in the Postmodern Literature of Travel: Pico Iyer's *The Global Soul* (2001)

15h Helen Goethals (Université de Toulouse- Jean Jaurès)
'Drinking *retsina* under the elm trees': the logic of empire in the Near East

15h45 Pause (salle RE 411)

16h-17h Journée d'études : fin et suite

